

JASON VASS

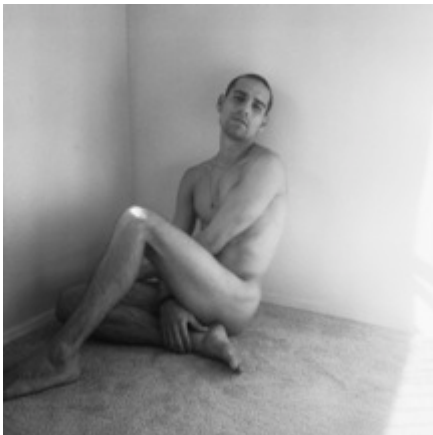
Luke Austin:
Soft Instant



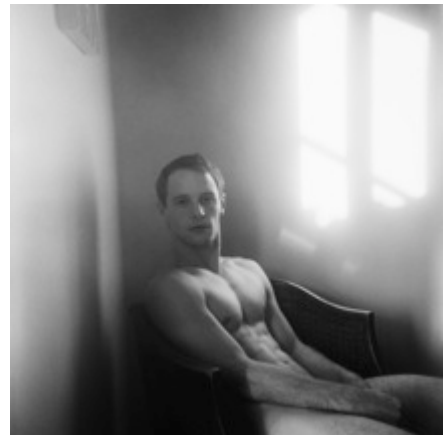
Bentley (New York City), 2015
Archival inkjet print
58 x 58 inches
ed. 1 of 2



Timothy (New York City), 2015
Archival inkjet print
58 x 58 inches
ed. 1 of 2



Daniel (Los Angeles), 2016
Archival inkjet print
36 x 36 inches
37 ¾ x 37 ¾ framed
ed. 1 of 5



John (Los Angeles), 2016
Archival inkjet print
36 x 36 inches
37 ¾ x 37 ¾ inches
ed. 1 of 5

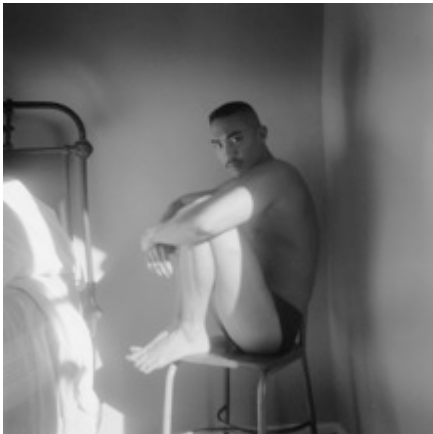
JASON VASS



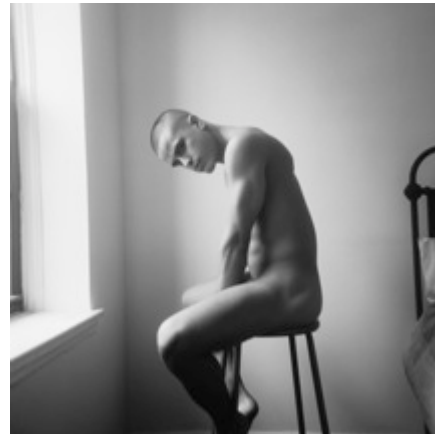
Joey (Los Angeles), 2016
Archival inkjet print
36 x 36 inches
37 ³/₄ x 37 ³/₄ framed
ed. 1 of 5



Alex (Los Angeles), 2016
Archival inkjet print
36 x 36 inches
37 ³/₄ x 37 ³/₄ inches
ed. 2 of 5



Jonathan (Los Angeles), 2016
Archival inkjet print
36 x 36 inches
37 ³/₄ x 37 ³/₄ framed
ed. 2 of 5



Ben (New York City), 2015
Archival inkjet print
36 x 36 inches
37 ³/₄ x 37 ³/₄ inches
ed. 2 of 5

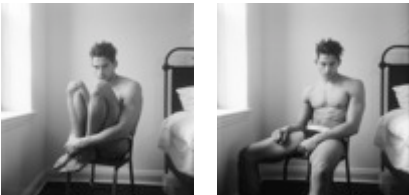
JASON VASS



Bentley (New York City), 2015
Archival inkjet print
36 x 36 inches
37 $\frac{3}{4}$ x 37 $\frac{3}{4}$ inches framed
ed. 1 of 5



Tyler (New York City), 2015
Archival inkjet print
36 x 36 inches
37 $\frac{3}{4}$ x 37 $\frac{3}{4}$ inches
ed. 1 of 5



Marlon (New York City), 2015
Archival inkjet print
29 $\frac{1}{2}$ x 17 inches
30 $\frac{3}{4}$ x 18 $\frac{1}{4}$ inches
ed. 1 of 5



Thibaut (Los Angeles), 2016
Archival inkjet print
39 x 22 inches
40 $\frac{1}{2}$ x 23 $\frac{1}{4}$ inches framed
ed. 1 of 5

Installation Shots for frame examples.

