

# JASON VASS

## LIMINAL SPACES



**Yvette Gellis**

*Liminal Embrace #1*, 2018

Oil, acrylic, graphite, original photo transfer, resin  
90 x 72  $\frac{1}{4}$  in.



**Yvette Gellis**

*Liminal Blue*, 2018

Oil, acrylic, graphite, original photo transfer  
91  $\frac{3}{4}$  x 50 in.



**Ty Pownall**

*Ouroboros*, 2018

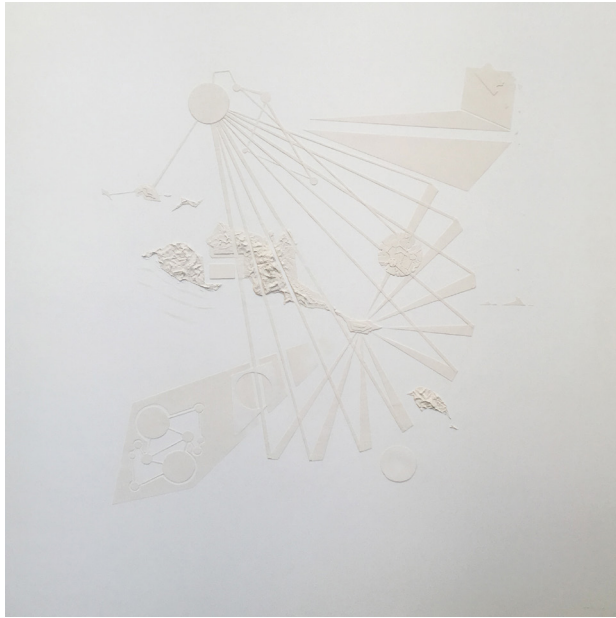
Spackle, spray paint on panel  
36 x 36 in.



**Yvette Gellis**

*Aqueous Igneous (with Violin)*, 2018

Oil, acrylic, graphite, original photo transfer, resin  
108 x 168 in.



**Ty Pownall**

*Shared Terrain*, 2018

Spackle, acrylic on panel

47 x 47 in.



**Yvette Gellis**

*Liminal Embrace #2*, 2018

Oil, acrylic, graphite, original  
photo transfer

90 x 72 ¼ in.



**Yvette Gellis**

*Breaking Point, Amping House  
#1, 2018*

Oil, acrylic, graphite,  
original photo transfer  
60 x 36 in.



**Yvette Gellis**

*Breaking Point, Amping House  
#2, 2018*

Oil, acrylic, graphite,  
original photo transfer  
60 x 36 in.



**Yvette Gellis**

*Forever Tomorrow Cut Yellow, 2018*

Oil, acrylic, graphite, original photo transfer,  
polyurethane foam  
51 ½ x 83 in.

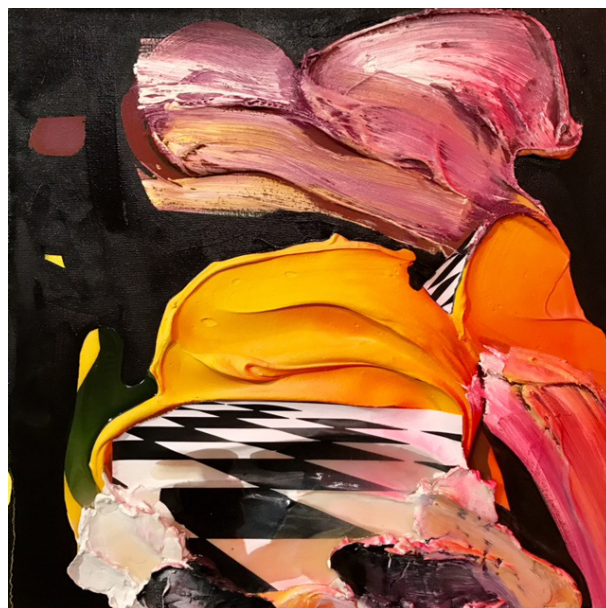


**Yvette Gellis**

*Liminal Space Dark*, 2018

Oil, acrylic, graphite, original photo transfer, ramp, vinyl

112 x 82 in.



**Yvette Gellis**

*Movement and Change Within Stability*

*#4*, 2018

Oil, acrylic, graphite, original photo transfer, resin

18 x 18 in.



**Yvette Gellis**

*Liminal Embrace India*, 2018

Oil, acrylic, graphite, original photo transfer

18 x 18 in.



**Yvette Gellis**

*Mini Liminal Embrace #2*, 2018

Oil, acrylic, graphite, original photo transfer

18 x 18 in.



**Yvette Gellis**

*Mini Liminal Blue #1*, 2018

Oil, acrylic, graphite, original  
photo transfer

18 x 18 in.

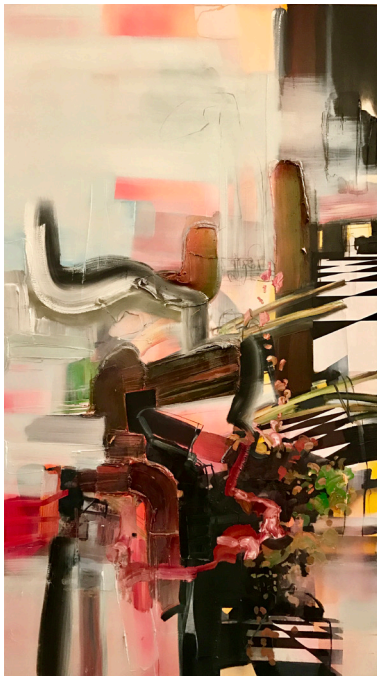


**Yvette Gellis**

*Mini Liminal Blue #2*, 2018

Oil, acrylic, graphite, original  
photo transfer

18 x 18 in.



**Yvette Gellis**

*Liminal Pink*, 2018

Oil, acrylic, graphite,  
original photo transfer

91  $\frac{3}{4}$  x 50 in.



**Ty Pownall**

*Surface Tension*, 2017

Steel, plaster, sand, spray paint  
60 x 24 x 28 in.



**Yvette Gellis**  
*Mini Liminal Pink*, 2018  
 Oil, acrylic, graphite, original photo transfer, resin  
 18 x 18 in.



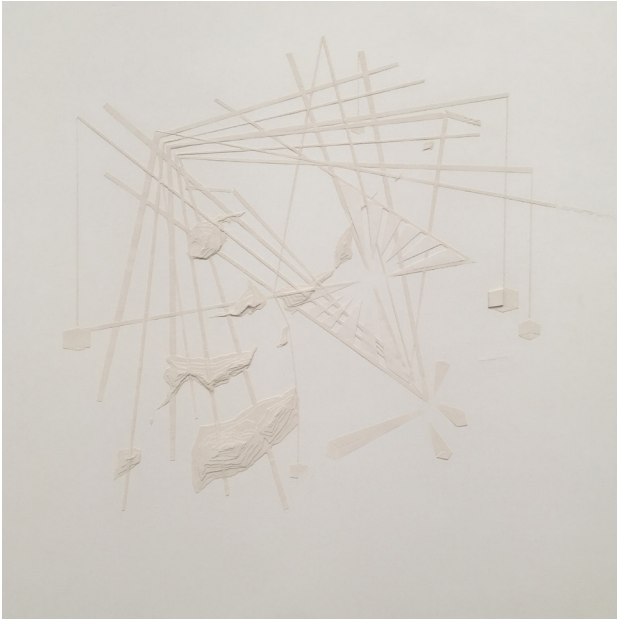
**Yvette Gellis**  
*Liminal Embrace #1*, 2018  
 Oil, acrylic, graphite, original photo transfer  
 18 x 18 in.



**Yvette Gellis**  
*Liminal Space Light*, 2018  
 Oil, acrylic, graphite, original photo transfer  
 112 x 82 in.



**Ty Pownall**  
*Interrupted Upward Slope*, 2018  
 Loose sand, steel, dry pigment, wood, spray paint  
 14 x 60 x 48 in.



**Ty Pownall**

*Specific Gravity*, 2018

Spackle, acrylic on panel

47 x 47 in.

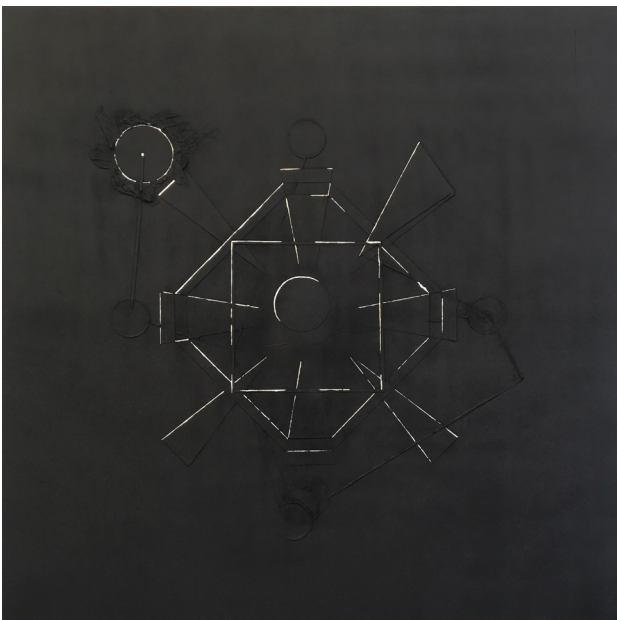


**Yvette Gellis**

*Liminal Embrace #3, Year*

Oil, acrylic, graphite, original photo transfer, polyurethane foam, resin

90 x 72 ¼ in.

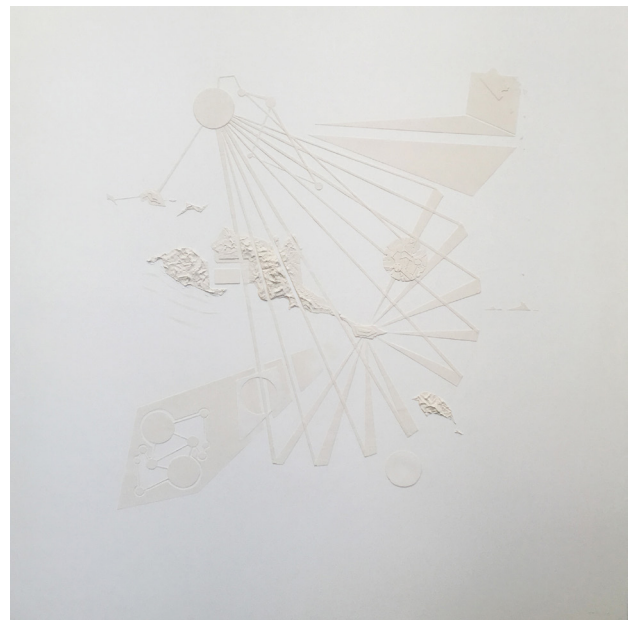


**Ty Pownall**

*Dense Time*, 2008

Spackle, spray paint on panel

47 x 47 in.

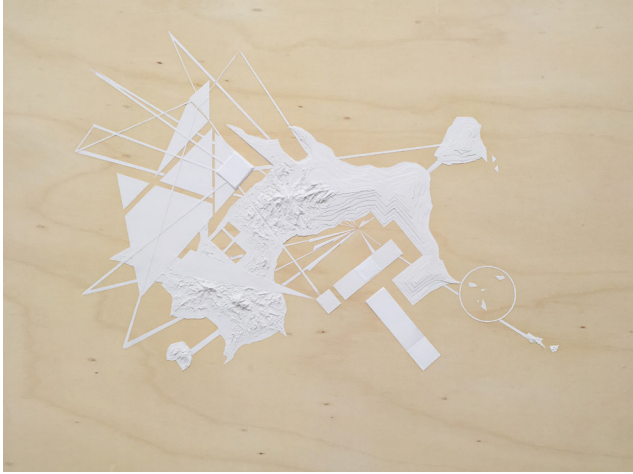


**Ty Pownall**

*Shared Terrain*, 2018

Spackle, acrylic on panel

47 x 47 in.

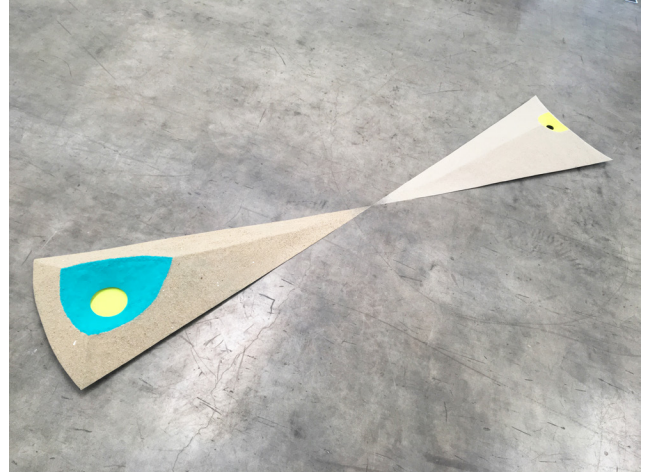


**Ty Pownall**

*Terra Incognita*, 2018

Spackle on panel

46 x 72 in.



**Ty Pownall**

*Relative Density of Moments*, 2018

Loose sand, steel, dry pigment, wood,  
spray paint

10 x 32 x 144 in.



**Yvette Gellis**

*3-Dimensional Liminal Space*, 2018

Oil, acrylic, original photo  
transfer, polyurethane foam, wood

5 x 5 ft.